
X-RAY JH5030A



FEATURE:

1. ALARM BY SOUNDS & LIGHT: ALARM BY SOUNDS AND LIGHT WHEN CONFORM TO CONDITION.
2. NETWORK INTERFACE : COULD BE CONNECT LOCAL AREA NETWORK AND SUPPORT MULTI-TERMINAL CHECK BAGGAGE AT SAME TIMES
3. SAFETY RAY: TRANSMIT RAY UNDER AUTOMATIC CONTROL, AVOIDS THE MISS
4. IMAGE MONITORING FOR USER-FRIENDLY: THE MONITOR USE FOLD, ROTARY SYSTEM, OPERATORS ADJUSTS THE MONITOR POSITION WILLFULLY ACCORDING TO OWN NEED, REDUCES WEARILY.
5. SIMPLE OPERATION BY MOUSE: WITHOUT KEYBOARD AND WORK TABLE, CONTROL BY MOUSE, SAVE SPACE.
6. TURN OFF BY A KEY CONTROL: TURN OFF THE MACHINE ONLY NEED ONE STEP: REVOLVES THE KEY. THE EQUIPMENT AUTOMATIC SECURITY CLOSE-DOWN, DOES NOT NEED COMPLEX MANY STEPS, IS SIMPLER.
7. EAGLE-EYE: COULD BE EXPEDIENTLY OBSERVING ENLARGEMENT AREA.
8. ESTIMATE MALFUNCTION BY SELF: AUTOMATIC ESTIMATE MALFUNCTION AND PROMPT
9. MESSAGE, HELPFUL FOR THE MAINTENANCE.
10. TECHNICAL DATA:
11. TUNNEL SIZE: 500 (W) ×300 (H) MM

-
12. CONVEYOR SPEED: 0.22 M/S
13. CONVEYOR MAX LOAD: 20 KG
14. SINGLE INSPECTION DOSAGE < 1.5 μ GY
15. WIRE RESOLUTION: 0.1MM METAL LINE
16. STEEL PENETRATION: 8MM ARMOR PLATE
17. FILM SAFETY: FOR ISO 1600
18. MAXIMUM LEAKAGE RADIATION <0.3 μ GY/H
- 19.
20. X-RAY GENERATOR:
21. ORIENTATION: VERTICALLY UPWARD
22. TUBE CURRENT: 0.4~0.5MA (ADJUSTABLE)
23. ANODE VOLTAGE: 80 KV(ADJUSTABLE)
24. ANGLE: 60°
25. GENERATOR COOLING/WORKING PERIODS SEALED OIL BATH WITH FORCED AIR/100%
26. IMAGE PERFORMANCE SYSTEM:
27. X-RAY SENSOR: L TYPE PHOTO-DIODE ARRAY DETECTOR, 12BIT
- 28.
29. MONITOR: HIGH RESOLUTION 17INCH COLOR LCD DISPLAY
- 30.
31. COLOR QUALITY: 24 BIT REAL COLORS
- 32.
33. EDGE ENHANCEMENT: OBJECT CONTOUR EDGE IS MORE DISTINCT
- 34.
35. SUPER IMAGE ENHANCEMENT: IMAGE DETAIL IS MORE DISTINCT
- 36.
37. HIGH PENETRATE STRENGTH DISPLAY: INCREASE BRIGHTNESS OF DARK AREA IN IMAGE TO DISPLAY OBJECT WHICH IS BEHIND HIGH ABSORPTIVITY MASS DISTINCTLY
- 38.
39. LOW PENETRATE STRENGTH DISPLAY: INCREASE CONTRAST OF LOW ABSORPTIVITY MASS (EASY TO PENETRATE) TO DISPLAY IT DISTINCTLY
- 40.
41. MAGNIFIER: FUNCTION OF PARTIAL ENLARGEMENT
- 42.
43. BRIGHTENING/DIMMING: INCREASE BRIGHTNESS OF IMAGE/DECREASE BRIGHTNESS OF IMAGE
- 44.
45. IMAGE RECURRENCE: DISPLAY PREVIOUS TWENTY IMAGES AND PROCESS ANY ONE OF THEM
- 46.
47. IMAGE RESTORATION: RESTORE IMAGE TO INITIAL STATUS AT THE TIME OF STOPPING CONVEYOR
- 48.
49. IMAGE STORING: REAL TIME STORE ANY IMAGE AND PROCESS IT IN OPERATION STATUS
- 50.
51. MULTI-ENERGY FUNCTION:
52. MULTI-ENERGY COLOR: DISPLAY ORGANIC MATERIAL FOR ORANGE, DISPLAY INORGANIC

MATERIAL FOR BLUE, AND DISPLAY MIXTURE FOR GREEN

53.

54. HIGH ENERGY/LOW ENERGY: SWITCH TO DISPLAY TWO ENERGY TYPE, HIGH ENERGY STANDS FOR METAL ETC., LOW ENERGY STANDS FOR NONMETALLIC

55.

56. AUXILIARY FUNCTION FOR DRUGS & EXPLOSIVES: HELP TO DETECT SUCH DANGEROUS MATERIALS AS DRUGS & EXPLOSIVES ETC.

57.

58. AUDIBLE & VISIBLE ALARM: GIVE SOUND AND VISIBLE SIGNAL WHEN CONFORMING TO CONDITION

59.

60. OPERATING ENVIRONMENT:

61. STORAGE TEMPERATURE: -20°C TO 60°C

62. OPERATING TEMPERATURE: 0°C TO 45°C

63. RELATIVE HUMIDITY: 20 TO 95% NON-CONDENSING

64. SYSTEM POWER: 220 VAC (±10%) 50±3HZ

65. POWER WASTAGE: 1.0 KW (MAX)

66. NOISE: <65DB

X-RAY JH5030C



FEATURE:

1. ALARM BY SOUNDS & LIGHT: ALARM BY SOUNDS AND LIGHT WHEN CONFORM TO CONDITION.
2. NETWORK INTERFACE : COULD BE CONNECT LOCAL AREA NETWORK AND SUPPORT MULTI-TERMINAL CHECK BAGGAGE AT SAME TIMES
3. SAFETY RAY: TRANSMIT RAY UNDER AUTOMATIC CONTROL, AVOIDS THE MISS
4. IMAGE MONITORING FOR USER-FRIENDLY : THE MONITOR USE FOLD, ROTARY SYSTEM, OPERATORS ADJUSTS THE MONITOR POSITION WILLFULLY ACCORDING TO OWN NEED, REDUCES WEARILY.
5. SIMPLE OPERATION BY MOUSE: WITHOUT KEYBOARD AND WORK TABLE, CONTROL BY MOUSE, SAVE SPACE.
6. TURN OFF BY A KEY CONTROL: TURN OFF THE MACHINE ONLY NEED ONE STEP: REVOLVES THE KEY. THE EQUIPMENT AUTOMATIC SECURITY CLOSE-DOWN, DOES NOT NEED COMPLEX MANY STEPS, IS SIMPLER.
7. EAGLE-EYE: COULD BE EXPEDIENTLY OBSERVING ENLARGEMENT AREA.

8. ESTIMATE MALFUNCTION BY SELF: AUTOMATIC ESTIMATE MALFUNCTION AND PROMPT MESSAGE, HELPFUL FOR THE MAINTENANCE.

TECHNICAL DATA:

TUNNEL SIZE: 500 (W) ×300 (H) MM
CONVEYOR SPEED: 0.22M/S
CONVEYOR MAX LOAD: 20 KG
SINGLE INSPECTION DOSAGE < 1.5μGY
WIRE RESOLUTION: 0.1MM METAL LINE
STEEL PENETRATION: 32MM ARMOR PLATE
FILM SAFETY: FOR ISO 1600
MAXIMUM LEAKAGE RADIATION <0.3μGY/H

X-RAY GENERATOR:

ORIENTATION: VERTICALLY UPWARD
TUBE CURRENT: 0.4~1.2MA (ADJUSTABLE)
ANODE VOLTAGE: 100~160 KV(ADJUSTABLE)
ANGLE: 80°
GENERATOR COOLING/WORKING PERIODS SEALED OIL BATH WITH FORCED AIR/100%

IMAGE PERFORMANCE SYSTEM:

X-RAY SENSOR: L TYPE PHOTO-DIODE ARRAY DETECTOR, 12BIT
MONITOR: HIGH RESOLUTION 17INCH COLOR LCD DISPLAY
COLOR QUALITY: 24 BIT REAL COLORS
EDGE ENHANCEMENT: OBJECT CONTOUR EDGE IS MORE DISTINCT
SUPER IMAGE ENHANCEMENT: IMAGE DETAIL IS MORE DISTINCT

HIGH PENETRATE STRENGTH DISPLAY: INCREASE BRIGHTNESS OF DARK AREA IN IMAGE TO DISPLAY OBJECT WHICH IS BEHIND HIGH ABSORPTIVITY MASS DISTINCTLY

LOW PENETRATE STRENGTH DISPLAY: INCREASE CONTRAST OF LOW ABSORPTIVITY MASS (EASY TO PENETRATE) TO DISPLAY IT DISTINCTLY

MAGNIFIER: FUNCTION OF PARTIAL ENLARGEMENT

BRIGHTENING/DIMMING: INCREASE BRIGHTNESS OF IMAGE/DECREASE BRIGHTNESS OF IMAGE

IMAGE RECURRENCE: DISPLAY PREVIOUS TWENTY IMAGES AND PROCESS ANY ONE OF THEM

IMAGE RESTORATION: RESTORE IMAGE TO INITIAL STATUS AT THE TIME OF STOPPING CONVEYOR

IMAGE STORING: REAL TIME STORE ANY IMAGE AND PROCESS IT IN OPERATION STATUS

MULTI-ENERGY FUNCTION:

MULTI-ENERGY COLOR: DISPLAY ORGANIC MATERIAL FOR ORANGE, DISPLAY INORGANIC MATERIAL FOR BLUE, AND DISPLAY MIXTURE FOR GREEN

HIGH ENERGY/LOW ENERGY: SWITCH TO DISPLAY TWO ENERGY TYPE, HIGH ENERGY STANDS FOR METAL ETC., LOW ENERGY STANDS FOR NONMETALLIC

AUXILIARY FUNCTION FOR DRUGS & EXPLOSIVES: HELP TO DETECT SUCH DANGEROUS MATERIAL AS DRUGS & EXPLOSIVES ETC.

AUDIBLE & VISIBLE ALARM: GIVE SOUND AND VISIBLE SIGNAL WHEN CONFORMING TO CONDITION

OPERATING ENVIRONMENT:

STORAGE TEMPERATURE: -20°C TO 60°C
OPERATING TEMPERATURE: 0°C TO 45°C
RELATIVE HUMIDITY: 20 TO 95% NON-CONDENSING
SYSTEM POWER: 220 VAC (±10%) 50±3HZ
POWER WASTAGE: 1.0 KW (MAX)
NOISE: <65DB

X-RAY JH6550



FEATURE:

1. ALARM BY SOUNDS & LIGHT: ALARM BY SOUNDS AND LIGHT WHEN CONFORM TO CONDITION.
2. NETWORK INTERFACE : COULD BE CONNECT LOCAL AREA NETWORK AND SUPPORT MULTI-TERMINAL CHECK BAGGAGE AT SAME TIMES
3. SAFETY RAY: TRANSMIT RAY UNDER AUTOMATIC CONTROL, AVOIDS THE MISS.
4. SIMPLE OPERATION BY MOUSE: WITHOUT KEYBOARD AND WORK TABLE, CONTROL BY MOUSE, SAVE SPACE.
5. TURN OFF BY A KEY CONTROL: TURN OFF THE MACHINE ONLY NEED ONE STEP: REVOLVES THE KEY. THE EQUIPMENT AUTOMATIC SECURITY CLOSE-DOWN, DOES NOT NEED COMPLEX MANY STEPS, IS SIMPLER.
6. EAGLE-EYE: COULD BE EXPEDIENTLY OBSERVING ENLARGEMENT AREA.
7. ESTIMATE MALFUNCTION BY SELF: AUTOMATIC ESTIMATE MALFUNCTION AND PROMPT MESSAGE, HELPFUL FOR THE MAINTENANCE.

TECHNICAL DATA:

TUNNEL SIZE:	650 (W) ×500 (H) MM
CONVEYOR SPEED:	0.22 M/S 1
CONVEYOR MAX LOAD:	100 KG
SINGLE INSPECTION DOSAGE	< 1.5μGY
WIRE RESOLUTION:	0.1MM METAL LINE
STEEL PENETRATION:	30MM ARMOR PLATE
FILM SAFETY:	FOR ISO 1600
MAXIMUM LEAKAGE RADIATION	<0.3μGY/H

X-RAY GENERATOR:

ORIENTATION:	VERTICALLY UPWARD
TUBE CURRENT:	0.4~1.2MA (ADJUSTABLE)
ANODE VOLTAGE:	100~160 KV(ADJUSTABLE)
ANGLE:	80°
GENERATOR COOLING/WORKING PERIODS	SEALED OIL BATH WITH FORCED AIR/100%

IMAGE PERFORMANCE SYSTEM:

X-RAY SENSOR:	L TYPE PHOTO-DIODE ARRAY DETECTOR, 12BIT
MONITOR:	HIGH RESOLUTION 17INCH COLOR LCD DISPLAY
COLOR QUALITY:	24 BIT REAL COLORS
EDGE ENHANCEMENT:	OBJECT CONTOUR EDGE IS MORE DISTINCT
SUPER IMAGE ENHANCEMENT:	IMAGE DETAIL IS MORE DISTINCT
HIGH PENETRATE STRENGTH DISPLAY:	INCREASE BRIGHTNESS OF DARK AREA IN IMAGE TO DISPLAY OBJECT WHICH IS BEHIND HIGH ABSORPTIVITY MASS DISTINCTLY
LOW PENETRATE STRENGTH DISPLAY:	INCREASE CONTRAST OF LOW ABSORPTIVITY MASS (EASY TO PENETRATE) TO DISPLAY IT DISTINCTLY
MAGNIFIER:	FUNCTION OF PARTIAL ENLARGEMENT
BRIGHTENING/DIMMING:	INCREASE BRIGHTNESS OF IMAGE/DECREASE BRICHTNESS OF IMAGE

IMAGE RECURRENCE: DISPLAY PREVIOUS TWENTY IMAGES AND PROCESS ANY ONE OF THEM

IMAGE RESTORATION: RESTORE IMAGE TO INITIAL STATUS AT THE TIME OF STOPPING CONVEYOR

IMAGE STORING: REAL TIME STORE ANY IMAGE AND PROCESS IT IN OPERATION STATUS

MULTI-ENERGY FUNCTION:

MULTI-ENERGY COLOR: DISPLAY ORGANIC MATERIAL FOR ORANGE, DISPLAY INORGANIC MATERIAL FOR BLUE, AND DISPLAY MIXTURE FOR GREEN

HIGH ENERGY/LOW ENERGY: SWITCH TO DISPLAY TWO ENERGY TYPE, HIGH ENERGY STANDS FOR METAL ETC., LOW ENERGE STANDS FOR NONMETALLIC

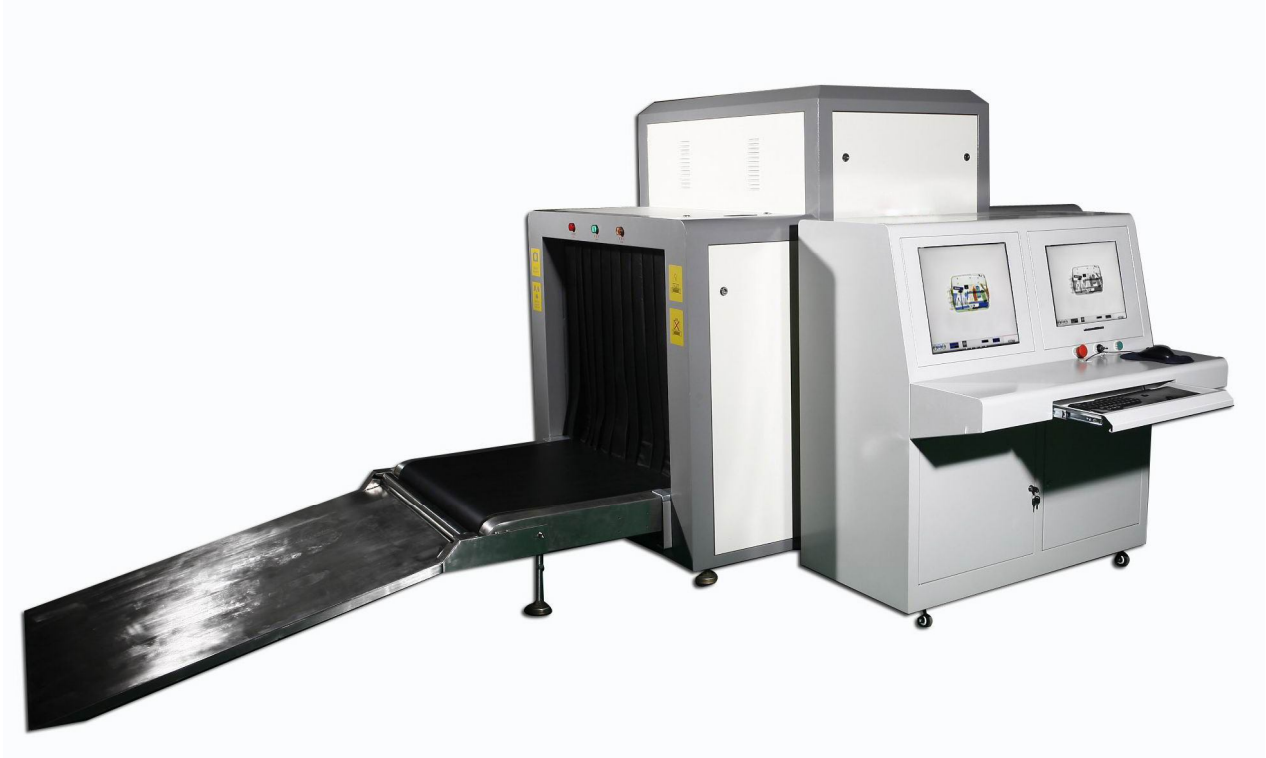
AUXILIAY FUNCTION FOR DRUGS & EXPLOSIVES: HELP TO DETECT SUCH DANGEROUS MATERIAL AS DRUGS & EXPLOSIVES ETC.

AUDIBLE & VISIBLE ALARM: GIVE SOUND AND VISIBLE SIGNAL WHEN CONFORMING TO CONDITION

OPERATING ENVIRONMENT:

STORAGE TEMPERATURE: -20°C TO 60°C
OPERATING TEMPERATURE: 0°C TO 45°C
RELATIVE HUMIDITY: 20 TO 95% NON-CONDENSING
SYSTEM POWER: 220 VAC (±10%) 50±3HZ
POWER WASTAGE: 1.0 KW (MAX)
NOISE: <65DB

X-RAY JH8065



FEATURE:

1. ALARM BY SOUNDS & LIGHT: ALARM BY SOUNDS AND LIGHT WHEN CONFORM TO CONDITION.
2. NETWORK INTERFACE : COULD BE CONNECT LOCAL AREA NETWORK AND SUPPORT MULTI-TERMINAL CHECK BAGGAGE AT SAME TIMES
3. SAFETY RAY: TRANSMIT RAY UNDER AUTOMATIC CONTROL, AVOIDS THE MISS
4. TURN OFF BY A KEY CONTROL: TURN OFF THE MACHINE ONLY NEED ONE STEP: REVOLVES THE KEY. THE EQUIPMENT AUTOMATIC SECURITY CLOSE-DOWN, DOES NOT NEED COMPLEX MANY STEPS, IS SIMPLER.
5. EAGLE-EYE: COULD BE EXPEDIENTLY OBSERVING ENLARGEMENT AREA.
6. ESTIMATE MALFUNCTION BY SELF: AUTOMATIC ESTIMATE MALFUNCTION AND PROMPT MESSAGE, HELPFUL FOR THE MAINTENANCE.

TECHNICAL DATA:

TUNNEL SIZE:	800 (W) x650 (H) MM
CONVEYOR SPEED:	0.22 M/S
CONVEYOR MAX LOAD:	150 KG
SINGLE INSPECTION DOSAGE	< 1.5 μ GY
WIRE RESOLUTION:	0.1MM METAL LINE
STEEL PENETRATION:	30MM ARMOR PLATE

FILM SAFETY: FOR ISO 1600
MAXIMUM LEAKAGE RADIATION <0.3μGY/H

X-RAY GENERATOR:

ORIENTATION: VERTICALLY UPWARD
TUBE CURRENT: 0.4~1.2MA (ADJUSTABLE)
ANODE VOLTAGE: 100~160 KV(ADJUSTABLE)
ANGLE: 80°
GENERATOR COOLING/WORKING PERIODS: SEALED OIL BATH WITH FORCED AIR/100%

IMAGE PERFORMANCE SYSTEM:

X-RAY SENSOR: L TYPE PHOTO-DIODE ARRAY DETECTOR, 12BIT

MONITOR: HIGH RESOLUTION 17INCH COLOR LCD DISPLAY

COLOR QUALITY: 24 BIT REAL COLORS

EDGE ENHANCEMENT: OBJECT CONTOUR EDGE IS MORE DISTINCT

SUPER IMAGE ENHANCEMENT: IMAGE DETAIL IS MORE DISTINCT

HIGH PENETRATE STRENGTH DISPLAY:

INCREASE BRIGHTNESS OF DARK AREA IN IMAGE TO DISPLAY OBJECT WHICH IS BEHIND HIGH ABSORPTIVITY MASS DISTINCTLY

LOW PENETRATE STRENGTH DISPLAY:

INCREASE CONTRAST OF LOW ABSORPTIVITY MASS (EASY TO PENETRATE) TO DISPLAY IT DISTINCTLY

MAGNIFIER: FUNCTION OF PARTIAL ENLARGEMENT

BRIGHTENING/DIMMING: INCREASE BRIGHTNESS OF IMAGE/DECREASE BRIGHTNESS OF IMAGE

IMAGE RECURRENCE: DISPLAY PREVIOUS TWENTY IMAGES AND PROCESS ANY ONE OF THEM

IMAGE RESTORATION: RESTORE IMAGE TO INITIAL STATUS AT THE TIME OF STOPPING CONVEYOR

IMAGE STORING: REAL TIME STORE ANY IMAGE AND PROCESS IT IN OPERATION STATUS

MULTI-ENERGY FUNCTION:

MULTI-ENERGY COLOR: DISPLAY ORGANIC MATERIAL FOR ORANGE, DISPLAY INORGANIC MATERIAL FOR BLUE, AND DISPLAY MIXTURE FOR GREEN

HIGH ENERGY/LOW ENERGY: SWITCH TO DISPLAY TWO ENERGY TYPE, HIGH ENERGY STANDS FOR METAL ETC., LOW ENERGE STANDS FOR NONMETALLIC

AUXILIARY FUNCTION FOR DRUGS & EXPLOSIVES: HELP TO DETECT SUCH DANGEROUS MATERIAL AS DRUGS & EXPLOSIVES ETC.

AUDIBLE & VISIBLE ALARM: GIVE SOUND AND VISIBLE SIGNAL WHEN CONFORMING TO CONDITION

OPERATING ENVIRONMENT:

STORAGE TEMPERATURE:	-20°C TO 60°C
OPERATING TEMPERATURE:	0°C TO 45°C
RELATIVE HUMIDITY:	20 TO 95% NON-CONDENSING
SYSTEM POWER:	220 VAC (±10%) 50±3HZ
POWER WASTAGE:	1.2 KW (MAX)
NOISE:	<65DB

X-RAY JH10080



FEATURE:

1. ALARM BY SOUNDS & LIGHT: ALARM BY SOUNDS AND LIGHT WHEN CONFORM TO CONDITION.
2. NETWORK INTERFACE : COULD BE CONNECT LOCAL AREA NETWORK AND SUPPORT MULTI-TERMINAL CHECK BAGGAGE AT SAME TIMES
3. SAFETY RAY: TRANSMIT RAY UNDER AUTOMATIC CONTROL, AVOIDS THE MISS.
4. TURN OFF BY A KEY CONTROL: TURN OFF THE MACHINE ONLY NEED ONE STEP: REVOLVES THE KEY. THE EQUIPMENT AUTOMATIC SECURITY CLOSE-DOWN, DOES NOT NEED COMPLEX MANY STEPS, IS SIMPLER.
5. EAGLE-EYE: COULD BE EXPEDIENTLY OBSERVING ENLARGEMENT AREA.

6. ESTIMATE MALFUNCTION BY SELF: AUTOMATIC ESTIMATE MALFUNCTION AND PROMPT MESSAGE, HELPFUL FOR THE MAINTENANCE.

TECHNICAL DATA:

TUNNEL SIZE:	1000 (W) ×800 (H) MM
CONVEYOR SPEED:	0.22 M/S
CONVEYOR MAX LOAD:	200 KG
SINGLE INSPECTION DOSAGE	< 1.5 μ GY
WIRE RESOLUTION:	0.1MM METAL LINE
STEEL PENETRATION:	30MM ARMOR PLATE
FILM SAFETY:	FOR ISO 1600
MAXIMUM LEAKAGE RADIATION	<0.3 μ GY/H

X-RAY GENERATOR:

ORIENTATION: VERTICALLY UPWARD
TUBE CURRENT: 0.4~1.2MA (ADJUSTABLE)
ANODE VOLTAGE: 100~160 KV(ADJUSTABLE)
ANGLE: 80°
GENERATOR COOLING/WORKING PERIODS SEALED OIL BATH WITH FORCED AIR/100%

IMAGE PERFORMANCE SYSTEM:

X-RAY SENSOR: L TYPE PHOTO-DIODE ARRAY DETECTOR, 12BIT
MONITOR: HIGH RESOLUTION 17INCH COLOR LCD DISPLAY
COLOR QUALITY: 24 BIT REAL COLORS
EDGE ENHANCEMENT: OBJECT CONTOUR EDGE IS MORE DISTINCT
SUPER IMAGE ENHANCEMENT: IMAGE DETAIL IS MORE DISTINCT
HIGH PENETRATE STRENGTH DISPLAY: INCREASE BRIGHTNESS OF DARK AREA IN IMAGE TO DISPLAY OBJECT WHICH IS BEHIND HIGH ABSORPTIVITY MASS DISTINCTLY
LOW PENETRATE STRENGTH DISPLAY: INCREASE CONTRAST OF LOW ABSORPTIVITY MASS (EASY TO PENETRATE) TO DISPLAY IT DISTINCTLY
MAGNIFIER: FUNCTION OF PARTIAL ENLARGEMENT
BRIGHTENING/DIMMING: INCREASE BRIGHTNESS OF
IMAGE/DECREASE BRICHTNESS OF IMAGE
IMAGE RECURRENCE: DISPLAY PREVIOUS TWENTY IMAGES AND PROCESS ANY ONE OF THEM
IMAGE RESTORATION: RESTORE IMAGE TO INITIAL STATUS AT THE TIME OF STOPPING CONVEYOR
IMAGE STORING: REAL TIME STORE ANY IMAGE AND PROCESS IT IN OPERATION STATUS

MULTI-ENERGY FUNCTION:

MULTI-ENERGY COLOR: DISPLAY ORGANIC MATERIAL FOR ORANGE, DISPLAY INORGANIC

MATERIAL FOR BLUE, AND DISPLAY MIXTURE FOR GREEN

HIGH ENERGY/LOW ENERGY: SWITCH TO DISPLAY TWO ENERGY TYPE, HIGH ENERGY STANDS FOR METAL ETC., LOW ENERGE STANDS FOR NONMETALLIC

AUXILIAY FUNCTION FOR DRUGS & EXPLOSIVES: HELP TO DETECT SUCH DANGEROUS MATERIAL AS DRUGS & EXPLOSIVES ETC.

AUDIBLE & VISIBLE ALARM: GIVE SOUND AND VISIBLE SIGNAL WHEN CONFORMING TO CONDITION

OPERATING ENVIRONMENT:

STORAGE TEMPERATURE: -20°C TO 60°C
OPERATING TEMPERATURE: 0°C TO 45°C
RELATIVE HUMIDITY: 20 TO 95% NON-CONDENSING
SYSTEM POWER: 220 VAC (±10%) 50±3HZ
POWER WASTAGE: 1.5 KW (MAX)
NOISE: <65DB